

Rab3A

Catalog Number: 21041

Gene Symbol: RAB3A

Description: Anti-Rab3A Rabbit Polyclonal Antibody

Background: Rab3A is a member of the Rab-family GTPases and is specifically targeted to synaptic vesicles.

Immunogen: A synthetic peptide near the C-terminus of human Rab3A.

Tested applications: ELISA, WB, IHC, IP

Recommended dilutions:

ELISA 1:100-1:5000

WB 1:100-1:2000

IHC 1:50-100

Concentration: 0.2 mg/ml

Host: Rabbit

Clonality: Polyclonal

Purity: Purified from serum

Format: Liquid

Storage buffer:

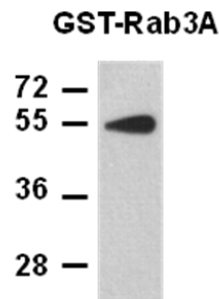
Preservative: no

Constituents: PBS (without Mg^{2+} and Ca^{2+}), pH 7.4, 150 mM NaCl, 50% glycerol

Species Reactivity: Rab3A antibody recognizes Rab3A of vertebrates.

Storage Conditions: Store at $-20^{\circ}C$. Avoid freeze / thaw cycles

Western blot:



WB: anti-Rab3A pAb

Western blot analysis of anti-Rab3A antibody. Purified GST-tagged Rab3A protein was used for Western blot with anti-Rab3A polyclonal antibody (Cat. # 21041).